

## Coantec ME+ Series Automotive Endoscope

- One Mega Ultra High-definition Industrial Camera
- Large Bending Angle, Can Check The Valve Directly
- Strong Adaptability To Different Environment, Can Customized Oil-proof Borescope
- High Temperature Cooling Device Optional , No Need To Wait For The Car To Cool Down
- Can Be Connected To External Large Screen Display To Facilitate Consultation
- Easy To Use, Durable And Cost-effective



reddot design award

FOR MORE INFORMATION PLEASE CONTACT :



### **BHAGWATI HARDWARE & MILL STORE**

4769, 1ST Floor, Old Post Office Building,  
Hauz Qazi, Delhi- 110006.

Ph : 011-66405958, 45025958,

Mobile : 9212012856, 9350076343

Website : [www.bhagwathardwaredelhi.in](http://www.bhagwathardwaredelhi.in)

e-mail : [sandeep@bhagwatimail.com](mailto:sandeep@bhagwatimail.com)

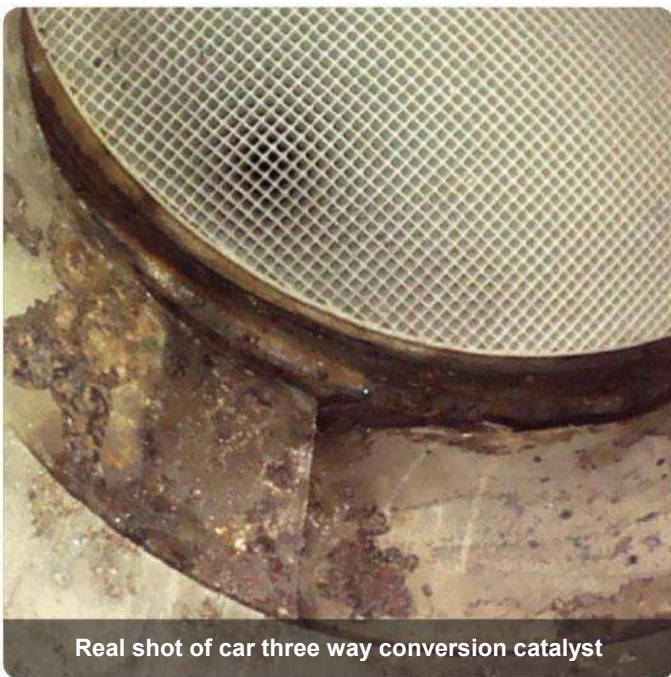


## Customized Services

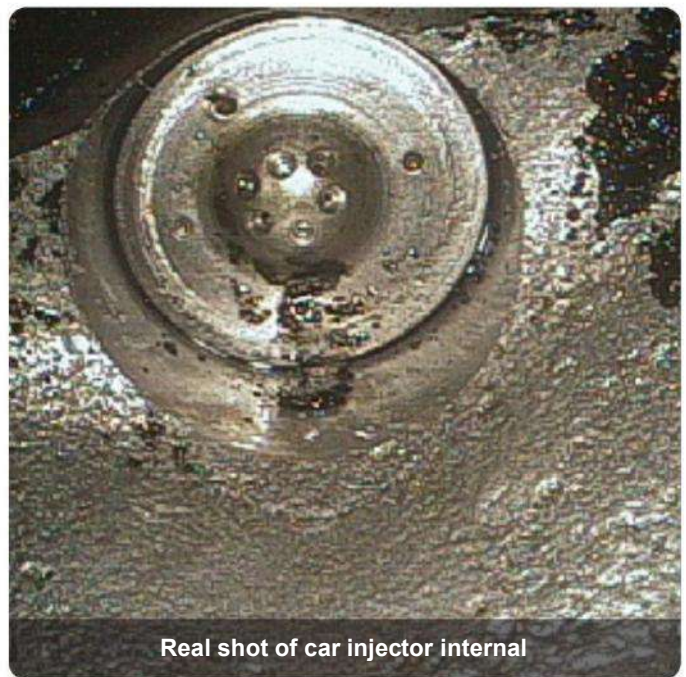
1. High temperature resistant tube can be customized, with cooling device can withstand 200°C high temperature;
  2. Oil-proof tube can be customized
- For more customized solutions, please contact us.

## Megapixel HD industrial camera

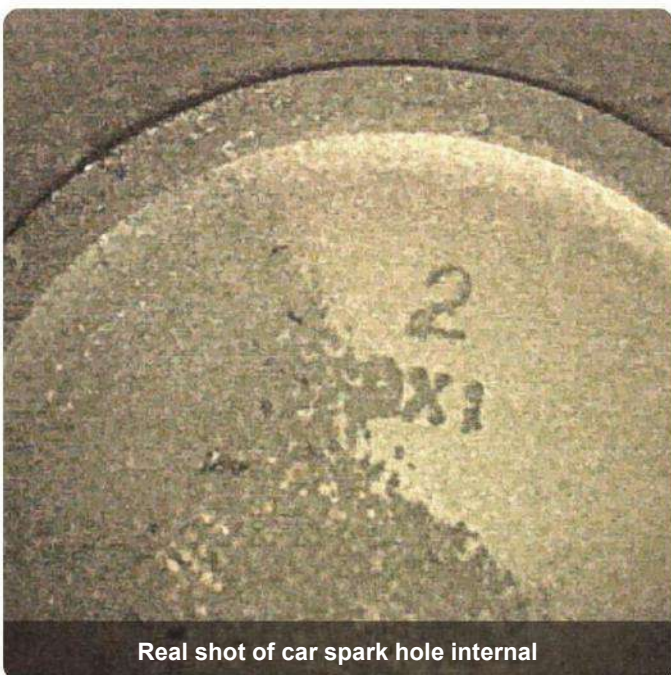
ME+ series automotive endoscope adopts 3.5-inch high-definition display screen, megapixel high-definition industrial camera, the detection image is more clear and delicate, the color is more bright, user can effectively observe the actual situation of the inner surface of the object. The image is stored in BMP lossless format, which doesn't reduce the image quality. Users can obtain high-quality static images and dynamic videos by taking photos and recording videos.



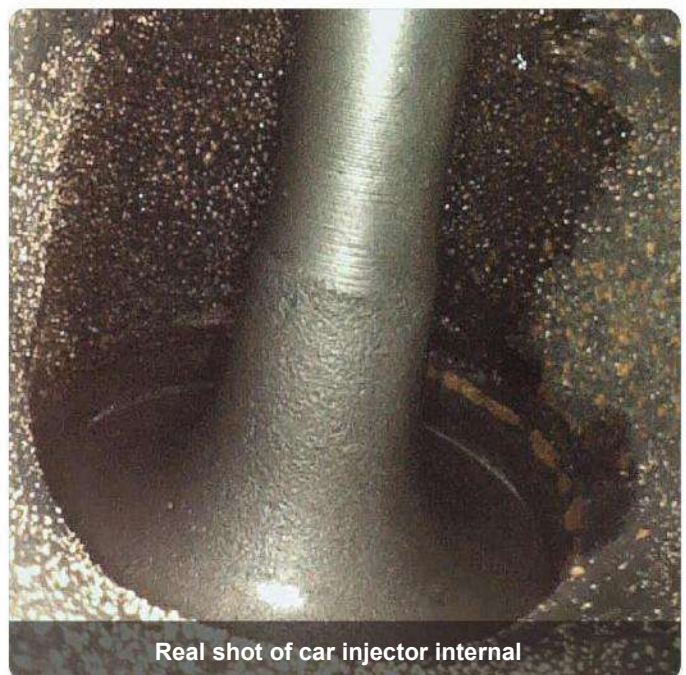
Real shot of car three way conversion catalyst



Real shot of car injector internal



Real shot of car spark hole internal



Real shot of car injector internal

## Super High Performance



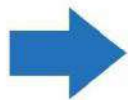
### Large Bending Angle, Can Check The Valve Directly

The probe adopts a newly designed precision machined steering part, and the minimum bending angle can reach 180 ° in a flat state, a larger range can be observed. When inspecting the automotive engine, the valve can be directly seen without Multi angle adjustment.



### Strong Adaptability To Different Environment, Can Customized Oil-proof Borescope

- The insert tube is made of tungsten alloy wire, new double isolation structure design, more exquisite laser welding technology, dust and water-proof grade IP67, and can be customized with oil-proof, suitable for oil environment.
- Optional cooling system, the probe is more resistant to high temperature and can work at 200 °C without waiting for engine cooling for a long time.



### Can Be Connected To External Large Screen Display To Facilitate Consultation

•The real-time detection image can be transmitted to the external large display through HDMI video output interface. Which is more convenient for viewing. It is suitable for expert or multi person consultation, making more accurate and reliable diagnosis and analysis results.

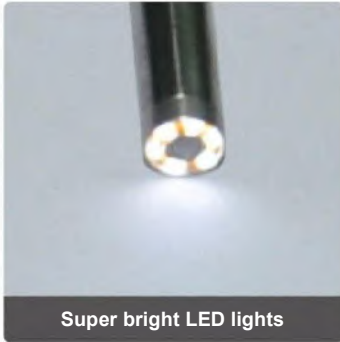




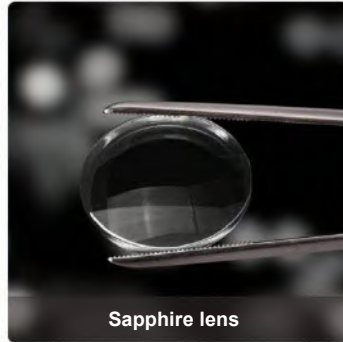
Titanium alloy probe



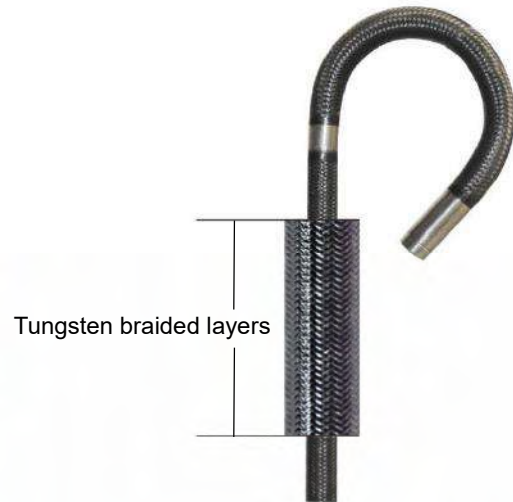
Ultra high definition camera



Super bright LED lights



Sapphire lens



Tungsten braided layers

### Easy To Use, Durable And Cost-effective

• The host is ergonomically designed, light and portable, easy to use with one hand. With user-friendly interface, simple and easy to understand, even for the first use by newcomers, can also quickly start. After drop test, the product has stable performance, durable and cost-effective.



## Technical Specification

Host	
Display Dimension	3.5-inch HD display
Display Resolution	640*480
Digital Zoom	Support real-time 4x zoom ,8x partial zoom when playback
LED Brightness Level	0-7 level adjustment
Photo/Video	Can take images and videos, and snapshot when recording
Document Format	Image :JPEG/BMP; Video:MP4
Time Watermark	Yes
Menu Language	Simplified Chinese,Traditional Chinese,English,Japanese,Korean, French,German,Portuguese,Spanish,Russian etc.
Screen Backlight Brightness	3 -level adjustment
Output Port	Micro HDMI
Storage Medium	Standard 8G capacity TF card, maximum support 32G
Host Dimension	240mm*102mm*126mm

Package Dimension	411mm*321mm*165mm
Host Weight	0.5kg(include battery)

<b>Tube</b>	
Probe Diameter (±0.1mm)	Φ6
Tube Material	Tungsten alloy wire wear-resistant braided tube
Camera Pixels	690,000
Depth of Field	10-100mm
Field of View	85°
Tube Length	1m
View Direction	Forward view
Lighting Mode	Front LED lighting
Joystick Control	360° all-way articulation
Bending Angle	≥180°
Guided Control Method	Mechanical control
Probe Waterproof Level	IP67

<b>Power</b>	
Power Supply Method	Rechargeable lithium battery (with battery reverse protection)
Battery	3.7V,3200mAh
System Operating Time	≥4H

<b>Operation Environment</b>	
Drop Level	Comply with GB/T 2423.8-1995 Standard
Machine Operating Temperature	-10°C-50°C
Probe Operating Temperature	-20°C-60°C
Storage Temperature	-20°C-60°C
Relative Humidity	15%-90%

<b>Configurations</b>	
Standard Configurations	ME+ videoscope x1,instrument case x1,lithium battery x1, charger x1, card reader x1, 8G TF card x1, anti-fall hand strap x1,user manualx1,precautions for use x1
Optional Configurations	Micro HDMI cable, cooling system,magnetic base